

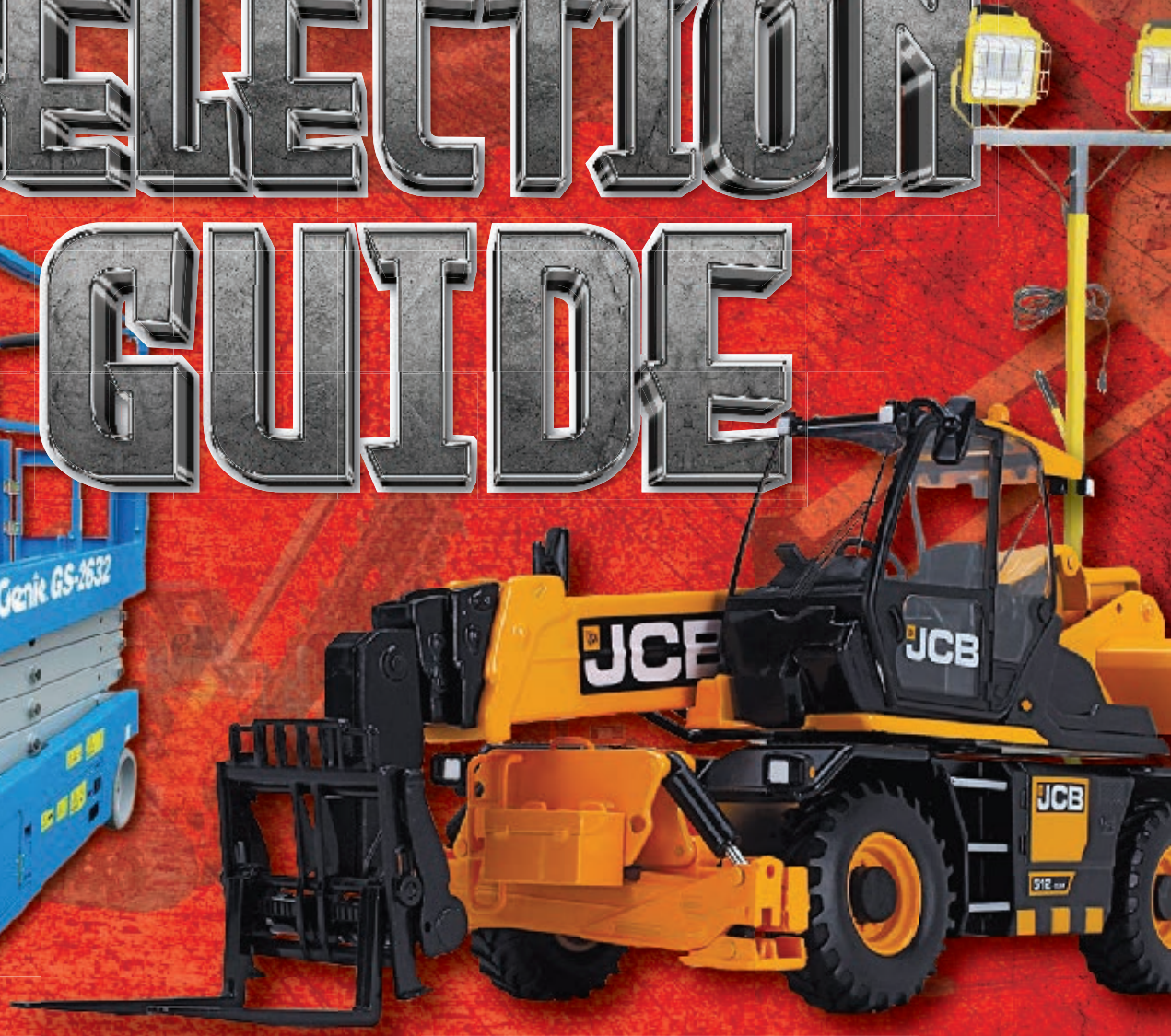
QUALITY TOOLS & EQUIPMENT



SALES RENTALS SERVICE

The Complete Source

**RENTAL
SELECTION
GUIDE**



THE BENEFITS OF RENTAL



INCREASES BORROWING CAPACITY

The equipment user who rents rather than buys finds borrowing easier because they have a better ratio of assets to liabilities. This can be important in securing construction bonds.

WAREHOUSING

Warehousing facilities are seldom needed for rental equipment. Renting makes it possible for contractors to operate with less overhead.



CONSERVATION OF CAPITAL

Renting conserves and frees capital for other, potentially more profitable uses.

MINIMUM EQUIPMENT FOR THE JOB

When ownership of basic equipment is combined with rental; as needed, idle time is minimized.

BREAKDOWN

Costs related to breakdowns of owned equipment are not applicable to rented equipment.



MAINTENANCE

Equipment rented on a day-to-day basis includes full maintenance.



CORRECT EQUIPMENT FOR THE JOB

Ownership forces another kind of inefficiency through use of the wrong size or type of equipment for a given job, even though the equipment is not obsolete. Rental ensures the right equipment for the job.

COST CONTROL

Better cost control is possible with rented equipment. Knowing the true costs of owned equipment is difficult. Rented equipment offers one accountable cost figure that is shown on the rental invoice.



PERSONAL PROPERTY TAXES & LICENSES

There are no personal property taxes or license costs for rented equipment.

INVENTORY CONTROL

Another advantage in renting is better inventory control. Contractors have less inventory loss due to theft when equipment is rented.



OBSOLESCENCE

Day-to-day renting eliminates obsolescence, ownership risks being handicapped with slow, unwieldy equipment.



RENTAL EQUIPMENT

QUALITY TOOLS & EQUIPMENT

Aerial Access Equipment

Ladders

Step Ladders - Aluminum or Fiberglass.....	2
Extension Ladders.....	2
Aluminum or Fiberglass.....	2

Aerial Lifts

Personnel Lifts.....	2
Scissor Lifts.....	2
Towable Boom Lifts	2
Boom Lifts	3
Scaffolding	3
Frames	3
Braces	3
Casters.....	3
Guard Rails	3
Bases.....	3
Decking	4
Work Stages	4
Shore Posts.....	4

Air Compressors, Air Tools & Hydraulic Tools

Air Compressors - Portable ..	4
Air Compressors - Towable ..	4
Air Compressor Accessories	4

Air Tools

Air Tampers.....	5
Blow Pipes	5
Chipping Hammers	5
Impact Wrenches	5
Paving Breakers	5
Post Drivers	5
Rock Drills	5
Sand Blasters	5
Scabblers	5

Cleaning and Floor

Maintenance Equipment

Pressure Washers	5
Vacuums	5
Sweepers	6
Edgers and Strippers.....	6
Sanders.....	6

Concrete & Masonry Equipment

Mixers	6
Concrete Buggies	6
Vibrators	6

Finishing

Bull Floats	6
Grinders - Planers	6

Power Trowels	6
---------------------	---

Drilling & Sawing

Brick Saws	7
Core Drilling	7
Cut-Off Saws	7
Slab Saws	7
Tile Saws	7

Electrical, Mechanical & Plumbing Contractors Equipment

Greenlee Knockout Sets	8
Pipe Stands/Reel Jacks.....	8
Ridgid Pipe Power Drive Threader.....	8
Dies, Wrenches, Cutters	9

Excavation &

Compaction Equipment

Post Hole Diggers	9
Backhoes	9
Skid Steer Loaders	9
Compact Track Loaders	10
Excavators	10
Trenchers	10
Wheel Loaders	10

The Benefits of Rental

1. Maintenance

Equipment rented on a day-to-day basis includes full maintenance. The user needs no repair shop, spare parts supply, mechanics, or maintenance records.

2. Breakdown

Costs related to breakdowns of owned equipment are not applicable to rented equipment. When rented equipment breaks down, it is replaced, thus less down time.

3. Warehousing

Warehousing facilities are seldom needed for rental equipment. Renting makes it possible for contractors to operate with less overhead.

4. Mobility

Equipment rental offers the contractor or customer mobility that does not exist with owned equipment. A contractor can bid on a job several hundred miles away based on renting equipment needed near the job site. Availability and convenience have become one of the strongest arguments against ownership.

5. Personal Property Taxes and Licences

There are no personal property taxes or license costs for rented equipment.

6. Inventory Control

Another advantage in renting is better inventory control. Contractors have less inventory loss due to theft when equipment is rented. Equipment signed for at an equipment rental business which must ultimately be returned is watched with sharper eyes.

7. Obsolescence

Day-to-day renting eliminates obsolescence. Ownership risks being handicapped with slow, unwieldy equipment. An equipment rental business provides the latest types and models of equipment.

8. Correct Equipment for the Job

Ownership forces another kind of inefficiency through use of the wrong size or type of equipment for a given job, even though the equipment is not obsolete. This can mean additional, though hidden, costs. Rental insures the correct equipment for the job.

9. Minimum Equipment for the Job

Equipment ownership becomes particularly expensive when the equipment is idle. When ownership of basic equipment is combined with rental; as needed, idle time is minimized.

10. Cost Control

Better cost control is possible with rented equipment. Knowing the true costs of owned equipment is difficult. Rented equipment offers one accountable cost figure - that shown on the rental invoice.

11. Conservation of Capital

Renting conserves and frees capital for other, potentially more profitable uses.

12. Increases Borrowing Capacity

The equipment user who rents rather than buys finds borrowing easier because they have a better ratio of assets to liabilities. Since the equipment does not appear as a liability on his balance sheet, the normal line for bank credit is not disturbed. This can be important in securing construction bonds



Line Locators10	Telescoping Forklifts13	Cord Accessories & Power
Compaction	Forklift Accessories13	Distribution Box16
Tampers10	Industrial Rollers13	Powder Actuated
Plates10	Jacks13	Stud Guns..... 16
Rollers10	Material Lifts14	Pumps & Accessories
Rollers11	Roustabouts & Grasshopper	Hydrostatic Pumps17
Generators & Lighting	Pipe Mover14	Submersible Pumps17
Equipment	Glass Handling Suction	Trash Pumps17
Portable Generators.....11	Cups14	Garden Hoses17
Towable Generators.....11	Lawn & Garden	Discharge.....17
Towable Light Tower.....11	Hand Lawn Tools14	Suction Hoses.....17
Surveying Instruments	Lawn Roller14	Adapters.....17
Lasers11	Lawn Aerators14	Trailers
Optical11	Sod Cutters14	Single Axle18
Heating & Ventilating	Stump Grinders14	Tandem Axle18
Equipment	Wood Chippers14	Dump Trailer18
Diesel Heaters.....12	Power Tools & Powder	Trailer Accessories18
Propane Heaters.....12	Actuated	Water Wagons & Trucks18
Propane Bottles12	Electric Power Tools Drills ..15	Welding Equipment
Ventilating Equipment	Impacts Drills.....15	Plasma Cutters19
Air Movers12	Grinders/Polishers15	Portable19
Man Hole Blowers12	Shears15	Towable19
Venturi Fans13	Electric Hand Saws15	Vehicles
Material Handling	Rotary Hammer.....15	Golf Carts19
Equipment	Demolition..... 16	Utility Carts19
Warehouse Forklifts.....13	Power distribution	
Rough Terrain Forklifts13	Extension Cords16	

Customer Service

• Rate Structure

1 day = 24 hours, 1 week = 7 days, 4 weeks = 28 days

• Metered Equipment

1 day = 8 hours, 1 week = 40 hours, 4 weeks = 160 hours

• Double Shift Rates

1-1/2 times day, week, or 4 week rate (whichever applies)

• Triple Shift Rates

2 times day, week, or 4 week rate (whichever applies)

• Overtime Charges

1/6 daily rate per hour, 1/4 weekly rate per day

- all rates are plus fuel
- please call for quotation on delivery & pick up charges
- theft and damage charges are 14% of rental amount
- environmental fee is 2%

How To Order

- Orders and reservations are accepted by phone, fax, and e-mail.
- Orders can be placed anytime between 7:00 a.m. to 5:00 p.m. Monday through Friday

Payment Options

- Frank's Supply accepts cash, checks, VISA, Master Card, American Express and DISCOVER. Cash customers must present credit card for deposit.

Commercial Credit Application

- Qualified companies, government agencies, and institutions are encouraged to apply for credit. Call your Frank's Supply representative for your credit application.
- This application can be used by individuals requesting to be added to Frank's Supply's mailing list

Aerial Access Equipment

Selection Guide

We want to help you select the right aerial access equipment for the job. Below are some questions & terms to help you in that selection.

The Job: Let us know what kind of work you need to do.

Working Height: Maximum height at which you need to work.

Platform Height: Subtract six (6) feet from working height to arrive at the maximum platform height of the equipment. All heights listed in this catalog are maximum platform heights.

Over-Reach: Can the equipment be placed directly below the work area or are there obstacles that require equipment capable of reaching over or around them?

Platform Size/Capacity: Does the job require you to lift only personnel & tools, or is there a need for materials to be elevated as well? The size & weight of your load must be matched to the platform size & capacity of the equipment.

Moving: Does the job require you to move from place to place frequently? If so, a self-propelled lift is required.

Ground Level Factors: Are you working on a smooth slab or on rough terrain? Is the surface level & firm? Are there any weight restrictions? Are you restricted to fuel type due to lack of ventilation or other environmental concerns? Is electric power available at the site? Dimensions of building entrances, doorways, ramps & obstacles need to be considered. Does the site have a freight dock or ground level delivery entrance?

Scaffolding: When scaffolding is required, we need to know if you need wide or narrow scaffolding and the length, width and height of the job. Will the scaffolding be free-standing or against a wall? Will the scaffolding be stationary or are casters needed?

Ladders: Observe & follow all safety & correct usage labels found on each ladder.

Ladders

Step Ladders - Aluminum or Fiberglass

- Werner 4' Step
- Werner 6' Step
- Werner 8' Step
- Werner 10' Step
- Werner 12' Step
- Werner 14' Step
- Werner 16' Step



Minimum Day Week 4-Week

Extension Ladders

Aluminum or Fiberglass

- Werner 16' Extension
- Werner 20' Extension
- Werner 24' Extension
- Werner 28' Extension
- Werner 32' Extension
- Werner 36' Extension
- Werner 40' Extension



Minimum Day Week 4-Week

Aerial Lifts

Personnel Lifts

- Genie 12' Runabout Lifts
- Genie 15' Runabout Lifts
- Genie 20' Runabout Lifts



Minimum Day Week 4-Week

Scissor Lifts

- 19' Electric Scissor Lift 30" or 32" Wide x 72" Platform Height 26'
- 26' Electric Scissor Lift 32" x 89" Platform
- 26' Electric Scissor Lift 46" x 89" Platform
- 26' Scissor Lift - Dual Fuel 4 x 4 All Terrain Tires 69" x 91" Platform
- 32' Electric Scissor Lift 32" x 89" Platform
- 32' Electric Scissor Lift 46" x 89" Platform
- 32' Scissor Lift - Dual Fuel 4 x 4 All Terrain Tires 69" x 91" Platform
- 39' Electric Scissor Lift 46" x 89" Platform
- 53' Scissor Diesel 4 x 4 all Terrain Tires 72" x 161" Platform



Minimum Day Week 4-Week

Towable Boom Lifts

JLG T350 - 35' Platform Height
Towable Boom - 20' Outreach

JLG T500J - 50' Platform Height
Towable Boom - 31'6" Outreach

Harness & Lanyard (required)



Minimum	Day	Week	4-Week
---------	-----	------	--------

Boom Lifts

30' - 34'/22' Articulating Electric
2' 6" x 4' platform

30'/20' Articulating Electric
2' 6" x 4' narrow platform

40' - 45' Telescoping Diesel
6' & 8' platform

45' Articulating Diesel
6' & 8' platform

45' Articulating Electric
6' & 8' platform

60' - 65' Telescoping Straight
6' & 8' platform

60' Articulating Diesel and Electric
6' & 8' platform

80' Articulating Boom
6' & 8' platform

80' - 85' Telescoping Boom
6' & 8' platform

125' Articulating Boom with Jib
6' & 8' platform

135' Telescoping Boom 8' Platform
Harness & Lanyard (required)



Minimum	Day	Week	4-Week
---------	-----	------	--------

Scaffolding

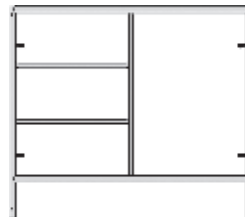
Frames

Bil-Jax 6' 6" x 5' Walk through Frame

Bil-Jax 5' x 5' Step Frame

Bil-Jax 4' x 5' Step Frame

Bil-Jax 3' x 5' Step Frame



Minimum	Day	Week	4-Week
---------	-----	------	--------

Braces

Bil-Jax 2' x 7' Cross Braces

Bil-Jax 3' x 7' Cross Braces

Bil-Jax 4' x 7' Cross Braces

Bil-Jax 7' Horizontal Brace



Minimum	Day	Week	4-Week
---------	-----	------	--------

Casters

Bil-Jax 8" Casters

Bil-Jax 5" Workstage Caster



Minimum	Day	Week	4-Week
---------	-----	------	--------

Guard Rails

Bil-Jax 5' Guard Rail

Bil-Jax 7' Guard Rail

Guard Rail Post



Minimum	Day	Week	4-Week
---------	-----	------	--------

Bases

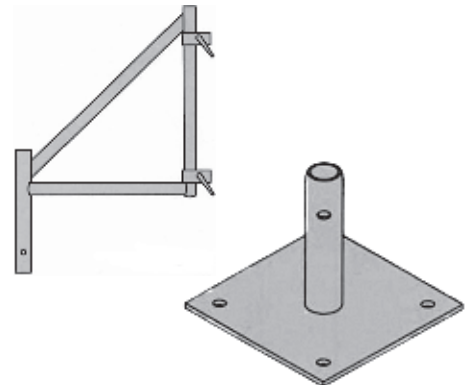
Base Plate

Screw Jacks with
Base Plates

Screw Jacks with
Swivel

Screw Jacks with
Caster Socket

30" Outriggers



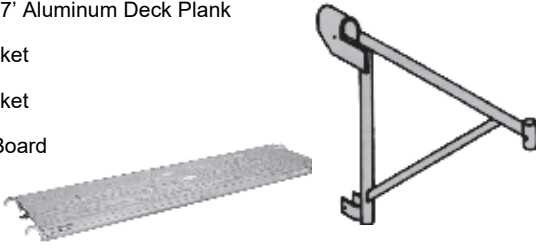
Minimum	Day	Week	4-Week
---------	-----	------	--------



THE COMPLETE SOURCE

Decking

- Werner 19" x 7' Aluminum Deck Plank
- 20" Side Bracket
- 24" Side Bracket
- 5' Steel Toe Board
- 7' Steel Toe Board



Minimum Day Week 4-Week

Work Stages

- Bil-Jax 30" x 6' Workstage
- Bil-Jax 30" x 8' Workstage
- 6' Guard Panel Set
- 8' Guard Panel Set
- Narrow Outrigger Set



Minimum Day Week 4-Week

Shore Posts



Telescoping 6' 11" to 11' 4"

Minimum Day Week 4-Week

Air Compressors, Air Tools & Hydraulic Tools

Selection Guide

Power Source/Type: Compressors are available in gas, diesel or electric power. Are there any environmental restrictions in the use of the gas or diesel? If an electric compressor is used, how far will it be from the power source? What is the amperage and voltage of the power source? Do you prefer a portable or towable compressor?

Number of Tools: How many tools will be used with the same air compressor?

Hose Requirements: How far is the compressor located from the work? If you own your air tools, what size hose & what type of couplers are required?

Air Requirements: What are the (A) Volume - cubic feet per minute (CFM), and (B) Pressure - pounds per square inch (PSI) requirements of the air tool? See chart

Continued on next Column.

Tool	CFM	PSI	Tool	CFM	PSI
Angle Hand Grinder	25	90	Angle Head Grinder	42	90
Breaker Hammers:			Breaker Hammers:		
60 lb.	60	80-110	60 lb.	50	80-100
90 lb.	85	80-110	90 lb.		
Chipping Hammer - 2"	35	80	Chipping Hammers - 2"	20	Variable
Impact Wrenches			Impact Wrenches	20-30	Variable
1/2"	18	90	1/2"	50-80	Variable 90
3/4"	25	90	3/4"	5	
1"	35	100	1"		
Pogo Stick Tampers	30	80-110	Pogo Stick Tampers		90

Air Compressors - Portable

- 9 CFM Electric
- 9 CFM Gas
- 16 CFM Gas



Minimum Day Week 4-Week

Air Compressors - Towable

Airman Models Available

- 185 CFM - Diesel
- 400 CFM - Diesel
- 900 CFM - Diesel



Minimum Day Week 4-Week

Air Compressor Accessories

- 3/8" x 50' Hose
- 3/4" x 50' Hose
- 2" x 25' Bull Hose
- Oiler with 6' Whip Hose
- Y Adapter



Minimum Day Week 4-Week

Air Tools

Air Tampers



APT 4" Pad
for Back Fill

Minimum	Day	Week	4-Week
---------	-----	------	--------

Blow Pipes



4' Blow Pipe for
3/4" Air Hose

Minimum	Day	Week	4-Week
---------	-----	------	--------

Chipping Hammers

15 lb. class Chipping Hammer
Bush Head
Chisel
Point



30 lb. class Rivet Buster
Point

Minimum	Day	Week	4-Week
---------	-----	------	--------

Impact Wrenches

1/2" Drive
3/4" Drive
1" Drive



Minimum	Day	Week	4-Week
---------	-----	------	--------

Paving Breakers

30 lb. Class
60 lb. Class
90 lb. Class
Asphalt Cutters
Chisels
Moil Points



Minimum	Day	Week	4-Week
---------	-----	------	--------

Post Drivers

Rhino PD55 Pneumatic Post Driver
Tee Post Adapters
Channel Post Drivers
Telespar Adapters



Minimum	Day	Week	4-Week
---------	-----	------	--------

Rock Drills

55 lb. Class
2' to 6' Drill Steel
1 3/8" to 2 1/2" Carbide
and Steel Bits



Minimum	Day	Week	4-Week
---------	-----	------	--------

Sand Blasters

Schmidt 300 lb. Pot
1" x 25' Hose Extension
Deadman Shutoff
Fresh Air Hood & Filter



Minimum	Day	Week	4-Week
---------	-----	------	--------

Scabblers

5 Head - Rough



Minimum	Day	Week	4-Week
---------	-----	------	--------

Cleaning and Floor Maintenance Equipment

Selection Guide

Proper surface cleaning & preparation is a must! Below are some considerations so we can recommend the right equipment for the job.

The Job: Let us know what kind of work you need to do. How big is the area you are cleaning? What kind of surface are you working with? Are you working inside or outside?

Floor Maintenance: What type of floor are you working on? How big is the area you are working on?

Cleaning Equipment

Pressure Washers



3000 PSI Hot
3000 PSI Cold
3500 PSI Hot - Trailer Mounted
50' Extension Hose
Chemical Attachment

Note: All rates are Plus Fuel

Vacuums



10 Gallon Wet-Dry Vacuum
Dust Extractor Vacuum

Note: A complete line of vacuum attachments available

Minimum	Day	Week	4-Week
---------	-----	------	--------

RENTAL EQUIPMENT

QUALITY TOOLS & EQUIPMENT

Sweepers



3 Wheel Sweeper 8' Width
60" Attachment for Skid Steer
Broce RCT-350 Road
Construction Sweeper
4 Wheel Highway Sweeper

Minimum	Day	Week	4-Week
Floor Maintenance Equipment			

Edgers and Strippers



Silver Line 7" Floor Edger
Electric Floor Stripper
Tile stripper cart for
20 lb Demo Hammer

Minimum	Day	Week	4-Week
Sanders			



Pioneer Eclipse 17" Floor Maintainer
Silver-Line SL-8 Drum Sander
Sand Paper Adaptor
Pad Driver

Minimum	Day	Week	4-Week
---------	-----	------	--------

Concrete & Masonry Equipment

Selection Guide

Concrete and masonry work involve many types of equipment. Tell us as much as you can about your job, so we can recommend the most efficient & productive equipment.

The Job: Let us know what kind of work you need to do. Does the job involve new construction, remodeling or demolition? Are you working indoors or outdoors? Are you working with walls, footings, foundations or slabs? What is the size & thickness? How much concrete will you be handling? What kind of finish will be required? If demolition is involved, what are you breaking up? What size is it? How old is it? Are you going to repour concrete? Are you working in a confined area?

Mixers



6 cu. ft. Gas Concrete Mixer
9 cu. ft. Gas Concrete Mixer
8 cu. ft. Gas Mortar Mixer
12 cu. ft. Gas Mortar Mixer

Minimum	Day	Week	4-Week
---------	-----	------	--------

Concrete Buggies



Hauls 16 cu. ft. / 2500 lbs.

Minimum	Day	Week	4-Week
Vibrators			



Oztec Concrete Vibrator
(incl. motor, shaft, head)
1" to 2 1/2" Heads
5' to 28' Shafts

Minimum	Day	Week	4-Week
---------	-----	------	--------

QUALITY PRICES



QUALITY PEOPLE

Finishing

Bull Floats



45" Magnesium
6' Aluminum Handles

Minimum	Day	Week	4-Week
---------	-----	------	--------

Grinders - Planers



Edco 2 Head Electric Grinder
Edco 2 Head Gas Grinder
Edco Hepa Dry Vacuum
Strip - Sert Set for Glue Removal
Diamond - Sert Set for Concrete Removal
7" Edco Edger
8" Diamond Head Grinder - Electric
10" Diamond Head Grinder - Gas
Edco 8" Concrete Planer - Gas
Edco 8" Concrete Planer - 240V Electric

Minimum	Day	Week	4-Week
Power Trowels			



46" Power Trowel

Minimum	Day	Week	4-Week
---------	-----	------	--------

Drilling & Sawing

Brick Saws



Husqvarna 14" Brick Saw
14" Block/Brick Blade
Saw Stand

Minimum	Day	Week	4-Week
---------	-----	------	--------

Core Drilling



Hand Held Core Drill - Up to 4" Bit Capacity
Core Drilling Machine - Up to 8" Bit Capacity
Core Drilling Vacuum Assembly
Core Bit Adapter (1 1/4" - 7 to 5/8" - 11")
6" and 12" Bit Extensions
1" to 12" Diamond Bits

Minimum	Day	Week	4-Week
---------	-----	------	--------

Cut-Off Saws



14" Electric Saw
14" Gas Saw
14" Dry & Wet Cut Diamond Blades

Minimum	Day	Week	4-Week
---------	-----	------	--------

Slab Saws



6" Blade - Cutting Depth 1" - 1 3/16"
8 HP Saw
14" Blade Guard
13 HP. Self Propelled Saw
14" Blade Guard
35 HP. Self Propelled Saw
18" Blade Guard
14" to 18" Diamond Blade (cured)
14" to 18" Diamond Blade (green)
14" to 18" Diamond Blade (asphalt)

Minimum	Day	Week	4-Week
---------	-----	------	--------

Tile Saws



Husqvarna 10" Tile Saw 18" Capacity
Saw Stand

Minimum	Day	Week	4-Week
---------	-----	------	--------

Electrical, Mechanical & Plumbing Contractors Equipment

Selection Guide

- Conduit Benders
- Cutters
- Fish Tapes
- Pipe Chain Vise Stands
- Pipe Dies
- Pipe Wrenches
- Power Pipe Vises
- Soil Pipe Cutters

Greenlee Cable Systems



GR6800 - Ultra Tugger Package 8K#

Minimum	Day	Week	4-Week
---------	-----	------	--------

FAMILY OWNED AND OPERATED SINCE 1953

RENTAL EQUIPMENT

QUALITY TOOLS & EQUIPMENT

Greenlee Knockout Sets



GR7310 - 1/2 - 4" Hydraulic Knockout Set

Minimum	Day	Week	4-Week
Ridgid Pipe Stands/Reel Jacks			



ST872 - Sumner Pipe Jack with V-Head Roller Head - 24" - 47"

Minimum	Day	Week	4-Week
Ridgid Pipe Threading Equipment			



00R - Ratchet Handle
12R - Ratchet Handle
450+ - Chain Tripod Pipe Vise

Minimum	Day	Week	4-Week
300 Power Threading Machine			



300 - Power Threading Machine 1/2 - 2" Capacity

Minimum	Day	Week	4-Week
---------	-----	------	--------

Ridgid Pipe Power Drive Threader



700 - Power Drive Threader

Minimum	Day	Week	4-Week
Ridgid Pipe Threading Equipment			



1822/1 - Power Threading Machine 1/8 - 2" Capacity

Minimum	Day	Week	4-Week
Dies, Wrenches, Cutters			



1/8" to 2" NPT Pipe Dies
1/2" to 2" NPT Die Head Set for 12
2-1/2" to 4" Geared Threader
24" to 48" Pipe Wrenches
1/2" to 2" Pipe Cutters
6" Soil Pipe Cutter

Minimum	Day	Week	4-Week
---------	-----	------	--------

**SALES
RENTAL
AND
SERVICE**

**OVER 400 QUALITY
MANUFACTURERS
REPRESENTED**

Excavation & Compaction Equipment

Selection Guide

If you're digging, moving, loading or compacting, the answers to the questions below will help us recommend the most efficient & productive equipment for you.

Excavation: What kind of work do you need to do? What is the size of the excavation? What is the depth, length, width & yardage? What kind of materials are you working with? Is it dirt, clay, sand, gravel, rocky soil, demolished asphalt, concrete, construction or demolition debris? Is there a size or weight restriction on any of the machinery that you will be using? What is the importance of compactness and maneuverability? Do you need a tracked or rubber tired machine? Do you need to load material into a truck?

Compaction: What are you compacting? Is it dirt, clay, sand, gravel, or asphalt? Is the soil wet or dry? Is it rocky? What size is the area to be compacted? Are you working in a trench, near a foundation or in an open area? What percent compaction (Proctor) is required? How many lifts (layers) of material need to be compacted?

Excavation Post Hole Diggers



Ground Hog 2-Man Digger
4" to 12" Auger Sizes Available
12", 24", 36" Extensions

Note: All rates are Plus Fuel

Minimum	Day	Week	4-Week
---------	-----	------	--------

Backhoes



JCB & John Deere & Case
14' 4" Digging Depth

Extend-a-Hoe Model Available
18' 2" Digging Depth

Breaker Attachment
Buckets: 12", 18", 24", 36"

Minimum	Day	Week	4-Week
---------	-----	------	--------

Skid Steer Loaders

Bobcat Model Available



1/8 Yard Diesel - 36" Wide
1/3 Yard Diesel - 60" Wide
.66 Yard Diesel - 66" Wide
1/8 Yd, 1/3 Yd, Dirt Buckets
1/3 Yd, Tooth Buckets
68" - 72" Grapple Buckets
68" Rock Bucket
60" Sweeper Attachments
Auger Attachments
6", 9", 12", 18", 24", 30", 36" Augers Bit
24" Auger Extensions
Hydraulic Breakers
Fork Kit

Minimum	Day	Week	4-Week
---------	-----	------	--------

Compact Track Loaders



Bobcat T450 - 1400 lb. Cap 56" Bucket
Bobcat T590, T66 - 2100 lb. Cap. 68" Bucket
Bobcat T770 3475 lb. Cap. 80" Bucket
John Deere 317G - 2,125 lb.
John Deere 325G - 2,590 lb.
Cat 255 - 2,499 lb.

Minimum	Day	Week	4-Week
---------	-----	------	--------

Excavators



3000 lbs. Mini Excavators
6' 3" Digging Depth
4,600- 5,000 lbs. Mini Excavators
7' 5" Digging Depth
7500 lbs. Mini Excavators
10'6" Digging Depth
12,000 lbs. Mini Excavators
12' 9.5" Digging Depth
18,000 lbs. Mini Excavators
15' 4" Digging Depth
4200 lbs. Electric
9' 2" Digging Depth
30,000 - 35,000 lbs. Full Size
19' 10' Digging Depth
45,000 - 55,000 lbs. Excavator

Minimum	Day	Week	4-Week
---------	-----	------	--------

Crawler Dozer



John Deere 650K - Engine Net Power 104hp
@2,200 rpm, Operating Weight 20,974 lb.,
Track on Ground 92 in., Blade Width Range
105-115 in.

Minimum	Day	Week	4-Week
---------	-----	------	--------

Trenchers



11 HP Walk Behind 4" x 24" Trench
18 HP Walk Behind 4" x 36" Trench
40/45 HP Ride On

Note: All rates are based on 6" - 8" cut. Call for quotations on 10" - 12" cut. Setup charge for special cuts and conditions.

Minimum	Day	Week	4-Week
---------	-----	------	--------

Wheel Loaders



1.3 yd. Articulating Yard Wheel Loader
JCB 409C T4F

3 Yard Wheel Loader
JCB 427 ZX T4F
John Deere 544G

Fork Attachment for 3 yd.

Minimum	Day	Week	4-Week
---------	-----	------	--------

RENTAL EQUIPMENT

QUALITY TOOLS & EQUIPMENT

Line Locators



Subsite Line Locator
Subsite Induction Clamp

Minimum	Day	Week	4-Week
---------	-----	------	--------

Compaction

Tampers



Tamper 11" x 13" Shoe
Tamper 6" x 13" Shoe

Minimum	Day	Week	4-Week
---------	-----	------	--------

Plates



Compactor 20" x 24" - dirt & asphalt

Minimum	Day	Week	4-Week
---------	-----	------	--------



Rollers



Radio Controlled Trench Roller
24" Drums
Extension for 33"

Minimum	Day	Week	4-Week
---------	-----	------	--------

Rollers



Ride-On Smooth Drum Roller
36" Single or Double Drum Vibratory
40" Double Drum Vibratory
48" Double Drum Vibratory
54" - 56" Single Drum Smooth/Pad
66" Single Drum Smooth/Pad
84" Single Drum Smooth/Pad

Minimum	Day	Week	4-Week
---------	-----	------	--------

Generators & Lighting Equipment

Selection Guide

We can help you match the generator with the equipment being powered. Below is helpful information needed for you to select the correct generator for your job.

Electrical Requirements: What devices are you powering from your generator? What are the electrical requirements, voltage, amperage, (Running versus startup) & phase? How much cord or cable will be used?

Environmental Factors: The actual output of a generator is effected by altitude & temperature. Please call us to be sure you receive the right unit for your job.

Generators

Portable



6 KW Gas Generator
10 KW Gas Generator

Minimum	Day	Week	4-Week
---------	-----	------	--------

Towable



20 KW Diesel Generator
40 KW Diesel Generator
58 KW - 64 KW Diesel Generator
95 KW Diesel Generator
120 KW Diesel Generator
176 KW - 183 KW Diesel Generator
264 KW Diesel Generator
(Ask About Accessories)
Power Distribution Box
100' Distribution Cord
50' Distribution Cord

Minimum	Day	Week	4-Week
---------	-----	------	--------

Towable Light Tower



Diesel Light Tower
4000 Watt Lighting with
4 KW Generator

Note: All rates are Plus Fuel

Minimum	Day	Week	4-Week
---------	-----	------	--------

Surveying Instruments

Lasers



Visible Self Leveling Laser
Self Leveling Electronic Level
Sewer Laser

Minimum	Day	Week	4-Week
---------	-----	------	--------

Optical



Builders Transit

Minimum	Day	Week	4-Week
---------	-----	------	--------

Heating & Ventilating Equipment

Selection Guide

Adequate heating or cooling of a job site pays off in increased comfort & efficiency. Below you'll find some helpful information to aid in your equipment selection.

Heating Areas: What is the cubic footage of the area to be heated? Is there adequate ventilation? Is the area closed in so that heat loss can be minimized? Do you require air circulation to speed any curing or drying? Is electric power available?

Personnel: Will people be working in the same location as the heaters? Will the heaters be attended or unattended?

Temperature: What is the desired inside temperature? Correct heater selection relies on calculation of temperature rise. Temperature rise is calculated by subtracting average outside temperature or ambient temperature from the desired inside temperature. **IMPORTANT:** Because you are calculating temperature rise, your desired inside temperature will drop if outside temperature should dip below average.

B.T.U.'s: Heaters are rated in BTU's (British Thermal Units). The objective is to replace heat at the same rate as it is lost. The following formula is used as a "rule-of-thumb" for selecting the proper heater.

Formula: BTU Heat Loss = Cu. ft. of area x 0.133 x Temperature Rise

Example: Building Size: 100 x 60 x 14 = 84,000 cu. ft. To calculate Temperature Rise: Outside Temperature = -2°
Desired Temperature = 55°
Temperature Rise = 57°

Calculation: 84,000 x 0.133 x 57 = 636,804 BTU Heat Required.

Air Calculation: Circulating air by use of a forced air heater or supplemental fan improves efficiency & stretches your heating dollar.

Diesel



100,000 BTU Heater
150,000 BTU Heater
600,000 BTU Heater

Minimum	Day	Week	4-Week
---------	-----	------	--------

Propane



150,000 BTU Forced Air Heater
375,000 BTU Forced Air Heater
250,000 BTU Forced Air Heater
400,000 BTU Indirect - Propane or Natural Gas
Forced Air Heater

Minimum	Day	Week	4-Week
---------	-----	------	--------

Propane Bottles

20 lb.
40 lb.
100 lb.
33 lb. Fork Lift Bottle
Bottle Manifold



Note: Bottle Rates Include Fuel

Minimum	Day	Week	4-Week
---------	-----	------	--------

Ventilating Equipment

Air Movers



Air Mover 30" Diameter
14,200 CFM - Box Fan

Minimum	Day	Week	4-Week
---------	-----	------	--------

FRANK'S RENTAL **FRANK'S**
SALES SERVICE

RENTAL EQUIPMENT

QUALITY TOOLS & EQUIPMENT

Man Hole Blowers



Manhole Blower Electric with 25' Hose Carpet Drying Attachment Available

Minimum	Day	Week	4-Week
---------	-----	------	--------

Evaporative Coolers



36" TPI - PortaCool Cooler

Minimum	Day	Week	4-Week
---------	-----	------	--------

Venturi Fans



AM8 Air Mover

Minimum	Day	Week	4-Week
---------	-----	------	--------

**SALES
RENTAL
AND
SERVICE**

Material Handling Equipment

Selection Guide

Let us know about the material you're handling. We have a tremendous selection of equipment, ranging from handtrucks to a 10,000 lb. forklift.

Material: What are you working with? What does it weigh? What are the physical dimensions? How far do you have to move the material? How high do you have to lift?

Work Area: Are you working inside or outside? What kind of surface are you working on? Slab floor, dirt or asphalt. Is it level? Are there any weight, size or environmental restrictions? Is the area confined? Are there any obstacles?

Forklifts

Warehouse



5,000 lb. Fork Lift - 15' Lift - Propane/Diesel
6,000 lb. Fork Lift - 15' Lift - Dual Fuel
15,000 lb. Fork Lift - 17' Lift - Straight Mast

Minimum	Day	Week	4-Week
---------	-----	------	--------

Rotating Telehandler



Rotating Forklift - Max Lift height 83' - Max reach 70'2" - Lift Capacity 12,125 lbs

Minimum	Day	Week	4-Week
---------	-----	------	--------

Rough Terrain



6000 lb. Fork Lift - 21' Lift - Straight Mast

Minimum Day Week 4-Week Telescoping



5000 lb. - 19' Lift 4 x 4
6000 lb. Forklift - 36' Lift 4 x 4
6000 lb. Forklift - 42' Lift 4 x 4
7000 lb. Forklift - 42' Lift 4 x 4
8000 lb. Forklift - 42' Lift 4 x 4
9000 lb. Forklift - 42' Lift 4 x 4
10,000 lb. Forklift - 54' Lift 4 x 4
12,000 lb. Forklift - 55' Lift 4 x 4
14,000 lb. Forklift - 56' Lift 4 x 4
Note: All Rates are Plus Fuel

Minimum	Day	Week	4-Week
---------	-----	------	--------

Forklift Accessories



1-1/4 Yd. Utility Bucket
4" x 72" Fork Extensions
5" x 72" Fork Extensions
8' Safety Work Platform
12' Truss Boom 2000 lb. Capacity
Lift-N-Tow Attachment
Universal Fit Lift Hook - 10,000 lb. Capacity

Minimum	Day	Week	4-Week
---------	-----	------	--------

Industrial Rollers



Hillman 30 Ton Roller Kit

Minimum	Day	Week	4-Week
---------	-----	------	--------

Jacks



- Pallet Jack
- Narrow Pallet Jack
- 5 Ton House Jack
- 6 Ton Hydraulic Jack
- 12 Ton Hydraulic Jack
- 17.5 Ton Hydraulic Jack
- 20 Ton Hydraulic Jack
- 35 Ton Hydraulic Jack



Minimum	Day	Week	4-Week
---------	-----	------	--------

Material Lifts



Material Lift 24' 650 lb. Lift Capacity
Fork Extensions

Minimum	Day	Week	4-Week
---------	-----	------	--------

Roustabouts & Grasshopper Pipe Mover



Roustabout 2K# - 15'

Minimum	Day	Week	4-Week
---------	-----	------	--------

Glass Handling Suction Cups



8" Diameter -
Lift Glass Weighing 125 lbs.

Minimum	Day	Week	4-Week
---------	-----	------	--------

Lawn & Garden

Hand Lawn Tools



3 Gallon Hand Sprayer
Propane Weed Burner



Minimum	Day	Week	4-Week
---------	-----	------	--------

Lawn Roller



18" Diameter x 24" Hand Roller

Minimum	Day	Week	4-Week
---------	-----	------	--------

Lawn Aerators & Rear Tine Rotatiller



Bluebird 4 hp. 18" width with 3" Aerating
Depth

Minimum	Day	Week	4-Week
---------	-----	------	--------

Sod Cutters



Ryan 5.5 hp.
18" Cutting Width

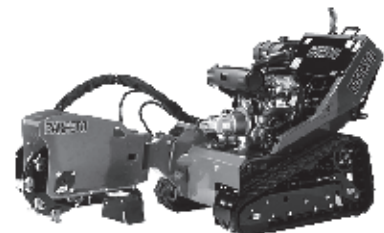
Minimum	Day	Week	4-Week
---------	-----	------	--------

QUALITY PRICES



QUALITY PEOPLE

Stump Grinders



Barreto E30SGB - Tracked
Vermeer SC30TX
Hyd. Swing Track Unit

Minimum	Day	Week	4-Week
---------	-----	------	--------

RENTAL EQUIPMENT

QUALITY TOOLS & EQUIPMENT

Wood Chippers



Vermeer & Salsco 25hp. Gas Engine
6" dia. Log Capacity

Minimum Day Week 4-Week Power Tools & Powder Actuated

Amperage Rating Overhaul/Ampt	0-2 ft	2-4 ft	4-6 ft	6-8 ft	8-10 ft	10-12 ft	12-14 ft
25 ft	18	18	18	18	16	14	12
50 ft	18	18	18	16	14	12	10
75 ft	18	18	16	14	12	10	8
100 ft	18	16	14	12	10	8	6
125 ft	16	14	12	10	8	6	4
150 ft	14	12	10	8	6	4	2
175 ft	12	10	8	6	4	2	1
200 ft	10	8	6	4	2	1	0
225 ft	8	6	4	2	1	0	0

Note: Extension cord sizes of each to ensure a drop of no over the 1% to be used load of load. Flexible extension cords are normally available under 100'.

Wire Size AWG	Maximum Amps	Voltage drop @ Maximum Amps for Given Wire Lengths			
		25'	50'	75'	100'
4	70	0.67	1.34	2.00	2.68
6	55	1.08	2.17	3.25	4.33
8	40	1.25	2.51	3.77	5.03
10	30	1.50	3.00	4.50	6.00
12	25	1.88	3.77	5.65	7.53
14	16	2.27	4.55	6.82	9.10
16	13	2.65	5.22	7.84	10.45

Note: When selecting extension cords, voltage drop should not exceed five volts for the rated amp and length of cord required.

Selection Guide

We'll help you match the power tool to the job you have to do. If you are using an extension cord, it is important to have the correct size of cord. Inadequate extension cords can result in damage to the tool. See Charts below.

- Car Polishers/Disc Sanders
- Grinders
- Rotary Hammers
- Chipping Hammers
- Impact Wrenches
- Rod Drivers
- Drills
- Nibblers

Continued on next Column.

- Sanders
- Drywall Screw Guns
- Power Planes
- Saws
- Extension Cords
- Power Shears

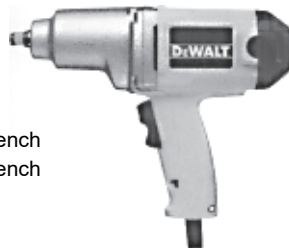
When an extension cord is used, it should always be a 3 wire cord to permit proper grounding of the tool. As the distance from the supply outlet increases, heavier gauge extensions are required. The use of extension cords of inadequate size wire causes a serious drop in voltage, loss of power and possible motor damage.

Electric Power Tools Drills



- Dewalt 3/8" Drill
- Dewalt 1/2" Drill
- Dewalt 1/2" Right Angle Drill
- Champion 3/4" Magnetic Drill Press
- Annular Cutter Adapter

Minimum Day Week 4-Week Impacts



- 1/2" Impact Wrench
- 3/4" Impact Wrench

Minimum Day Week 4-Week

Grinders/Polishers



- 4 1/2" Angle Grinder
- 7" / 9" Wildcat Angle Grinder

Minimum Day Week 4-Week

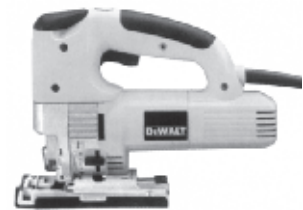
Shears



14 Gauge Shear

Minimum Day Week 4-Week

Electric Hand Saws



Jig Saw

Minimum Day Week 4-Week

Rotary Hammer



- 1" SDS Rotary Hammer
- 1 9/16" Spline Rotary Hammer

Accessories Include:

- 7/8", 1", 2" Chisels
- Moil Point
- 3/16" to 1" SDS Bits
- 3/8" to 2" Spline Bits
- Spline to SDS Adapter
- 7", 16" Spline Core Bit Adapter
- 1-1/4" to 5" Rotary Hammer Core Bits



Minimum Day Week 4-Week

Demolition



20 lb. Demolition Hammer
 60 lb. Demolition Hammer
 Accessories Include:
 1", 2", 3" Chisel
 Moil Point
 Asphalt Spade

Minimum	Day	Week	4-Week
---------	-----	------	--------

Power distribution

Extension Cords



12/3 x 50' Extension Cord
 12/3 x 100' Extension Cord
 10/3 x 50' Extension Cord
 10/3 x 100' Extension Cord

Minimum	Day	Week	4-Week
---------	-----	------	--------

Cord Accessories & Power Distribution Box



30 amp Pigtail
 with Twist or Straight Lock
 Power Distribution Box
 100' Distribution Cord
 50' Distribution Cord

Minimum	Day	Week	4-Week
---------	-----	------	--------

Powder Actuated

Stud Guns



.27 Caliber - Strip Load

Minimum	Day	Week	4-Week
---------	-----	------	--------

Pumps & Accessories

Selection Guide

Frank's Supply has pumps for any application...

- Diaphragm Pumps
- Submersible Pumps
- Hydrostatic Test Pumps
- Trash Pumps
- Hose and Accessories

The Job: Let us know what & how much material you're pumping. Pumps are available in gas, diesel or electric power. If an electric pump is used, how far will it be from the power source? What is the amperage and voltage of the power source?

Suction Lift: Vertical distance from the water to the pump should be as short as possible.

Total Head: Total vertical discharge capability of the pump. Capability decreases as head increases

Trash Pumps: Centrifugal. Designed to pump high volumes of clear water or water mixed with solids.

Mud Pumps: Diaphragm type. Pumps low volumes of high solid content & muddy or mucky water.

Submersible Pumps: Electric centrifugal clear water pumps that totally submerge for high efficiency & almost 100% removal of water from trenches, holes, footings, or other confined areas.

Priming: Some types of pumps are self-priming & can be left unattended. Others will suffer severe damage if allowed to run dry. Consult your Frank's Supply representative for details.

Pump Selection

Application	Diaphragm	Trash	Submersible
Clean Water.....	X	X	X
Slimey Water.....	X	X	X
Muddy Water.....	X	X	
Mucky Water.....	X	X	
Silt Water.....	X	X	
Abrasive Water.....	X	X	
High Solid Content.....	X	X	
Slow Seepage			
Ditch Water.....			X
Fast Seepage			
Ditch Water.....		X	X
Septic Tank.....	X	X	
Manholes.....		X	X

Setting the Standard



in Quality Equipment

RENTAL EQUIPMENT

QUALITY TOOLS & EQUIPMENT

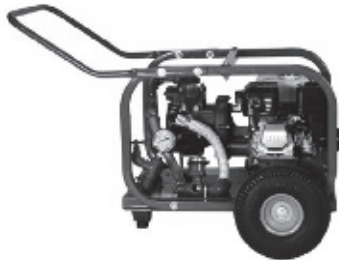
Pump Performance - G.P.M.

Total Head	Diaphragm Pump	Trash Pump		Submersible Pump		
	3"	3"	6"	1 1/2"	2"	3"
10'	85	330	1200	50	83	300
20'	55	310	1195	45	75	280
30'	45	305	1180	40	60	270
40'	35	300	1175	20	260	
50'	25	275	1160		245	
60'	15	215	1150		160	
70'	5	170	1120		160	
80'		88	950		130	
90'		25	700		85	
100'			450		50	

Note: G.P.M. discharge based on 10' suction lift.

Pumps

Hydrostatic Pumps



Hydrostatic Test Pump - 500 psi

Minimum	Day	Week	4-Week
---------	-----	------	--------

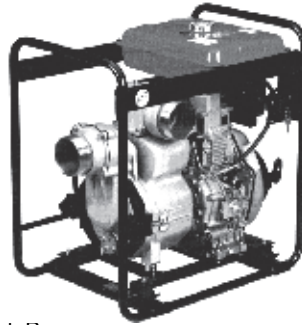
Submersible Pumps



2" Electric Submersible Pump

Minimum	Day	Week	4-Week
---------	-----	------	--------

Trash Pumps



- 2" Trash Pump
- 3" Trash Pump
- 4" Trash Pump

Pump Accessories

Garden Hoses



3/4" x 50' Hose

Minimum	Day	Week	4-Week
---------	-----	------	--------

Discharge Hoses



- 2" x 50' Hose
- 3" x 50' Hose
- 4" x 50' Hose

Minimum	Day	Week	4-Week
---------	-----	------	--------

THE COMPLETE SOURCE



Suction Hoses



- 2" x 20' Hose
- 3" x 20' Hose
- 4" x 25' Hose

Adapters



- 2 1/2" NST to 3/4" NPT
- 2 1/2" NST to 1 1/2" NPT
- 2 1/2" NST to 2" NPT
- 2 1/2" NST to 1 1/2" IPT

Minimum	Day	Week	4-Week
---------	-----	------	--------

WHEN YOU NEED THE BEST PRICE AND BEST SERVICE FOR ALL YOUR INDUSTRIAL NEEDS CALL



SALES • RENTALS • SERVICE
WWW.FRANKS-SUPPLY.COM

Trailers

Selection Guide

Safe hauling requires the proper matching of trailer, equipment & tow vehicle. Below are some questions to help in your selection.

Load: What are you hauling? How much does it weigh? What is the width, length, & height?

Tow Vehicle: What size truck will be pulling the load? Is it equipped with a hitch & ball? How far are you going with the load?

Note: Some rental equipment includes a trailer. Check the specific equipment listing in this catalog.

Single Axle



Ditch Witch, Felling and Trail Max
1540 lb.
2200 lb.
5000 lb. 12' 6" Deck

Minimum	Day	Week	4-Week
---------	-----	------	--------

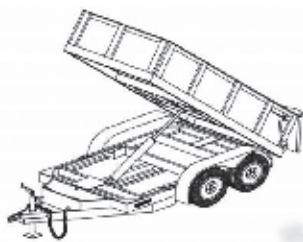
Tandem Axle



6,200 lb. - 20' Deck Over Trailer
7,000 lb. - 16' Deck
12,000 lb. - 16' & 20' Decks

Minimum	Day	Week	4-Week
---------	-----	------	--------

Dump Trailer



12' Dump Bed

Minimum	Day	Week	4-Week
---------	-----	------	--------

Trailer Accessories

- 2" ball with ball mount
- 2-5/16" ball with ball mount
- 2" trailer towing ball
- 2-5/16" trailer towing ball
- 2" Pintle/Ball combo
- Chains & Load Binders
- Tie Down Straps



Minimum	Day	Week	4-Week
---------	-----	------	--------

Water Trailers

Water Wagons & Trucks



- 500 Gallon Water Wagon with 2" Pump
- 2000 Gallon Single Axle Water Truck - Non CDL
- 4000 Gallon Tandem Axle - CDL Required

Note: All rates are Plus Fuel

Minimum	Day	Week	4-Week
---------	-----	------	--------

Welding Equipment

Selection Guide

From a spot repair to structural steel, Frank's Supply has the welding equipment to get the job done.

- Plasma Cutter
- Arc Welders
- Oxy/Acetylene

The Metal: What are you welding? What kind of metal? How thick is it? Are you spot welding or beading?

The Welder: How many amps do you need? What duty rating? What size rod? How much cable do you need? (See Chart on next page). Welders are available in gas, diesel or electric power. Are there any environmental restrictions in the use of gas or diesel? If an electric welder is used, How far will it be from the power source? What is the amperage and voltage of the power source? Do you prefer a portable or towable welder?

RENTAL EQUIPMENT

QUALITY TOOLS & EQUIPMENT

Welding Equipment

Amps	100	150	200	250	300	350	400	450	500	600
Fl. from Terminals:										
50 ft.	2	2	2	2	1	1-0	1-0	2-0	2-0	3-0
75 ft.	2	2	1	1-0	2-0	2-0	3-0	3-0	4-0	
100 ft.	2	1	1-0	2-0	3-0	4-0	4-0			
125 ft.	2	1-0	2-0	3-0	4-0					
150 ft.	1	2-0	3-0	4-0						
175 ft.	1-0	3-0	4-0							
200 ft.	1-0	3-0	4-0							
225 ft.	2-0	4-0								
250 ft.	2-0	4-0								
300 ft.	3-0									
350 ft.	4-0									
400 ft.	4-0									

Note: The welding cable cover should be oil and moisture resistant. The data above is based on the use of direct current.

Plasma Cutters



Air Plasma Cutter 3/8" Capacity

(Separate Air Supply Required)

Minimum Day Week 4-Week



THE COMPLETE SOURCE

Portable

140 amp MIG
Welder Package

Miller 185 amp
Portable Gas Welder

Welder Package
Oxy-Acetylene
Welding Outfit

Extra 50 ft. Welding Leads
Pipe beveling machine - No.2 & No. 3



Minimum Day Week 4-Week

Towable



Miller 300 amp Diesel Welder
7.5 KW Single Phase
10 KW Three Phase
Miller 400 amp Diesel Welder

Minimum Day Week 4-Week

Vehicles

Golf Carts



Gas Club Car
with Cargo Box

Minimum Day Week 4-Week

Utility Carts

Kawasaki Mule 3000 2 Seats
with Large Cargo Box

Polaris Ranger
570 Crew 4 Seats

Club Car Carryall 1700
4 Seat Diesel



Minimum Day Week 4-Week

Salesman: _____
Store #: _____



FAX OR MAIL THIS 2-PAGE APPLICATION TO:
ACCOUNTS@FRANKS-SUPPLY.COM

Frank's Supply
3311 Stanford Drive NE
Albuquerque, NM 87107
Fax: 505-884-0244

Full Legal Name/Business Entity: _____

Doing Business as (DBA): _____

Physical Address: _____ City: _____ State: _____ Zip: _____

Billing Address: _____ City: _____ State: _____ Zip: _____

Phone: _____ Fax: _____ Cell: _____

Email: _____

Type of Business: _____ Contractors License#: _____ Years in Business: _____

Bonding Company: _____ Contract: _____ Phone#: _____

Amount of Credit being Requested \$ _____ Tax Certificate Included? Yes ___ No ___ (if yes, original required)

Purchase Order Required? Dun & Bradstreet#: _____ Authorized Signers: _____

Corporation Partnership Proprietorship Tribal Entity FID# _____ State ID# _____

FINANCIAL INFORMATION

Bank: _____ Contact: _____ Account#: _____

Address: _____ Phone#: _____

TRADE REFERENCES

Name	Contact Address (City, State, & Zip)	Fax #	Account #
1.) _____	_____	_____	_____
2.) _____	_____	_____	_____
3.) _____	_____	_____	_____

PERSONAL INFORMATION ON OWNER/PRINCIPALS/GUARANTORS

Name/Title: _____ DOB: _____ Soc. Sec. #: _____

Home Address: _____ City: _____ State: _____ Zip: _____

Annual Income \$ _____ Monthly Housing Payment \$ _____

TERMS

1% 15 days from Invoice, Net 30 days.

Person signing below, agrees to pay interest at the rate of 1.5% per month (18% per annum) on all past due balances plus all cost of collection and reasonable attorney's fees, pre- and post-judgement, if account is placed for collections. Applicant understands and agrees it is submitting itself to the jurisdiction of New Mexico and venue proper in the County of Bernalillo, and any claims of a sovereign status are hereby waived. Applicant authorized Frank's Supply Co. Inc., to obtain any information from the references listed and/or from any other source Frank's Supply Co. Inc., determines is necessary prior to extending credit. If Corporation, undersigned guarantor jointly and severally, hereby personally guaranty unconditionally the payment of any sums or obligations which are now or shall hereafter become due by the Applicant to the Creditor. Frank's Supply Co. Inc., is a provider of payment information to credit reporting agencies.

I agree to notify Frank's Supply Company of any change of address or ownership within 30 days.

Signature: _____ Date: _____

Name (Print or Type): _____

★ Signature of Officer / Owner is required before credit can be approved



GUARANTY AGREEMENT

In consideration of the extension of credit granted by Frank's Supply Co. Inc., the undersigned hereby personally and unconditionally guaranty payment without presentment, demand or notice, of whatever amount the Applicant shall at any time be owing. This shall be an open, absolute, and continuing guaranty, and shall continue in force notwithstanding any change in the form of indebtedness or renewals or extensions granted by Frank's Supply Co. Inc., unless and until expressly revoked by written notice via registered mail provided any such written revocation shall not affect any indebtedness contracted prior to receipt of the revocation. The undersigned further agrees to pay all costs of collection whether incurred pre- or post- judgement, including attorney's fees and interest.

Date: _____ Signed: _____
Guarantor (Sign Individually)

Date: _____ Signed: _____
Guarantor (Sign Individually)

If applicable, please submit tax exempt certificate and/or certificate of insurance. (See Insurance Certificate Requirements)

El Paso, TX
1211 Barranca Drive
Toll-Free (800) 748-3726



Hobbs, NM
2230 W. Bender Rd.
Toll-Free (866) 475-8665

Albuquerque, NM
3311 Stanford Drive
Toll-Free (800) 432-5254

Farmington, NM
2655 E. Bloomfield Highway
Toll-Free (800) 541-8449

Los Alamos, NM
268 DP Road
Toll-Free (888) 568-1100

**The Complete Source
For Construction and Industry**

- Aerial Work Platforms
- Air Compressors
- Air Tools
- Backhoes
- Bobcat Loaders
- Cable Pullers



- Lasers
- Light Towers
- Mixers
- Piercing Tool
- Pipe Benders
- Ride-On Trenchers



- Compaction Equipment
- Concrete Saws
- Core Drilling Rigs
- Cut-Off Saws
- Diamond Blades
- Forklifts



- Rotary Hammers
- Scaffolding
- Scissor Lifts
- Welders



GSA Contract #
GS-06F-0031L



Family Owned and
Operated Since 1953

JOB INFORMATION SHEET

Customer: _____

Phone: _____

Street Address: _____

Email: _____

City: _____

State: _____

Customer: Owner General Contractor Subcontractor Material Supplier Other Leasehold Interest

DBE/MBE-Commercially Useful Function Verified

PROJECT INFORMATION

NAME _____

STREET ADDRESS _____

PHONE _____

EMAIL _____

CITY _____ STATE _____ ZIP _____

SCR Number _____ (UT Projects Only)

MNLR Number _____ (IA Residential)

OWNER / AWARDED AUTHORITY

NAME _____

STREET ADDRESS _____

PHONE _____

EMAIL _____

CITY _____ STATE _____ ZIP _____

LENDER - (CA & AZ PROJECTS)

NAME _____

STREET ADDRESS _____

PHONE _____

EMAIL _____

CITY _____ STATE _____ ZIP _____

ARCHITECT

NAME _____

STREET ADDRESS _____

PHONE _____

EMAIL _____

CITY _____ STATE _____ ZIP _____

Well Site / GPS Location: _____

Estimated Quantity: _____

Rental: Estimated Monthly Fee: _____

This job will have: One Furnishing Several furnishings Do no know

Signature: _____

Customer: _____

GENERAL CONTRACTOR

NAME _____

STREET ADDRESS _____

PHONE _____

EMAIL _____

CITY _____ STATE _____ ZIP _____

PRIME'S BONDING COMPANY

Is this a private bonded job?

NAME _____

STREET ADDRESS _____

PHONE _____

EMAIL _____

CITY _____ STATE _____ ZIP _____

NAME _____

STREET ADDRESS _____

PHONE _____

EMAIL _____

CITY _____ STATE _____ ZIP _____

SUB'S BONDING COMPANY or LESSEE (if applicable)

NAME _____

STREET ADDRESS _____

PHONE _____

EMAIL _____

CITY _____ STATE _____ ZIP _____

Estimated Dollar Value: _____

Estimated Term of Rental: _____

Date: _____

QUALITY TOOLS & EQUIPMENT



SALES • RENTALS • SERVICE

CERTIFICATE OF INSURANCE REQUIREMENTS FOR RENTAL CUSTOMERS

Rental customers that have General Liability, Auto Liability, and Leased/Rented Equipment Insurance policies should furnish us with a certificate of insurance.

Frank's Supply Company, Inc. should be named as additional insured on your General Liability Insurance policy and as loss payee on your Leased/Rented Equipment insurance policy. Certificate must show Franks Supply is listed as Loss Payee and Additional Insured.

Our Insurance company requires your General Liability Insurance policy to have limits of \$1 million each occurrence and \$2 million general aggregate.

Your Auto Liability Insurance policy should have a combined single limit \$1,000,000 for liability coverage. When renting an auto from Frank's Supply, we require Automobile Physical Damage insurance for hired autos with a limit adequate to cover the value of the automobile rented.

When renting a piece of equipment from us, you must insure Leased/Rented Equipment for a limit equal to the fair market value of the equipment being rented (\$100,000.00 minimum).

Our insurance company requires that your insurance company give us 30 days notice if they cancel your insurance.

Please ask your insurance agent to mail certificates of insurance to:

Frank's Supply Co., Inc.
3311 Stanford Dr . NE
Albuquerque, NM 87107

Or fax to our accounting department at (505) 884-0244

Or email a copy to aradmin@franks-supply.com

We will charge an additional 14% of the total rental equipment charge if we don't have a current certificate of Insurance on file that meets requirements.



THE COMPLETE SOURCE



- Aerial Work Platforms
- Air Compressors
- Air Tools
- Backhoes
- Bobcat Loaders
- Cable Pullers
- Concrete Saws
- Core Drilling Rigs
- Cut-Off Saws
- Diamond Blades
- Forklifts
- Lasers
- Light Towers
- Mixers
- Pipe Benders
- Ride-On Trenchers
- Rotary Hammers
- Scaffolding
- Scissor Lifts
- Compaction Equipment
- Welders

For Construction & Industry

Represents Over 400 Quality Manufacturers

DEWALT - PROTO - MILWAUKEE - GREENLEE - GENIE
 MILLER - WERNER - KNAACK - STARRETT - PIP
 UNITED ABRASIVES - GEARWRENCH - INGERSOLL-RAND

AWARDS

**DEPARTMENT OF ENERGY
 SMALL BUSINESS CONTRACTOR
 OF THE YEAR - 2006**



In July 2007, on behalf of Frank's Supply, our President Melissa Deaver-Rivera collected a plaque for the "National Small Business Sub Contractor of the Year" award from The Department of Energy

**AGC OUTSTANDING
 AFFILIATE SUPPLIER**



**2006
 2009
 2011
 2013
 2016
 AND
 2018**

**2009 AGC Presidents
 Award of Excellence**

Frank's Supply is Proud to be a Member of these Fine Associations...



www.franks-supply.com



SAFETY TRAINING

Frank's Supply provides safety training in a number of areas. These on-site safety programs cover situations such as aerial platform certifications, hand tool safety, ladder and scaffolding safety, fall protection, power tool safety, etc. Frank's factory trained safety coordinator provides a professional presentation to its customers.

Aerial Platform Certification

This training is to be general in nature since it covers safe operating instructions for all types of aerial platforms. The course consists of four key areas of learning – it covers responsibility, safety and operation, and finishes with practical hands-on operation. Trainees will receive aerial platform operation and safety certification cards at completion of course.

Forklift Operator Certification

Course covers both warehouse and rough terrain forklift operation. The course consists of two key areas of learning – the importance of forklift safety procedures and to demonstrate safe forklift operation. Trainees will receive a three-year forklift certification by successfully completing written and hands-on forklift safety tests.



Ladder Safety

General training in the proper use of ladders to reduce the possibilities of injury on the job. The course consists of two key areas of learning – it covers using the wrong ladder and how to choose the right ladder, misusing or abusing climbing equipment and how to use and set-up a ladder correctly. Trainees will learn how to read and understand the decal codes on the ladder.

Scaffold Safety

General training in the proper erection of scaffolding and a review of OSHA's Safety Standards for Scaffolds. The course consists of two key areas of learning – review of scaffold safety standards and what they mean. Plus, trainees receive practical hands-on erection of scaffold. Trainees will become a "competent scaffold erector" for the construction jobsites.

Other training programs offered include: Hand Tool Safety, Skid Steer Safety and Operation, Powder Actuated Tool Certification, Power Tool Safety and Fall Protection.

Call Frank's Supply for details on all training programs.

ATTENTION FEDERAL GOVERNMENT AGENCIES

Rent Today on Frank's Supply's GSA Federal Supply Contract

QUALITY TOOLS & EQUIPMENT



SALES • RENTALS • SERVICE

**Check out our GSA pricing
at GSA Advantage
www.gsaadvantage.gov
Search Frank's Supply**



Five Convenient Locations...

ALBUQUERQUE, NM

3311 Stanford Dr. NE, 87107
(505) 884-0000
(800) 432-5254
FAX (505) 864-1787
info@franks-supply.com

EL PASO, TX

1211 Barranca Dr., 79935
(915) 592-9700
(800) 748-3726
FAX (915) 592-3311
elpaso@franks-supply.com

FARMINGTON, NM

2655 E. Bloomfield Hwy., 87401
(505) 327-9831
(800) 541-8449
FAX (505) 326-0271
farmington@franks-supply.com

HOBBS, NM

2230 W. Bender Road, 88240
(575) 397-0220
(866) 475-8665
FAX (575) 397-0158
hobbs@franks-supply.com

LOS ALAMOS, NM

268 DP Road, 87544
(505) 661-1100
(888) 568-1100
FAX (505) 661-2509
losalamos@franks-supply.com

Store Hours

Monday - Friday 7:00 a.m. to 5:00 p.m. - Closed Saturdays & Sundays

www.franks-supply.com